



Protocol is proud to introduce the gold standard of ashwagandha root extracts: KSM-66 Ashwagandha®

KSM-66 Ashwagandha® is a full-spectrum clinically validated organic ashwagandha root extract that is produced using a unique proprietary extraction method that doesn't involve alcohol or any other chemical solvents.



Bioactive Compounds

- 600 mg Organic KSM-66 Ashwagandha® water extract (*Withania somnifera*) (Root)
- The extract is standardized to no less than 5% withanolides



Bioavailable Compounds

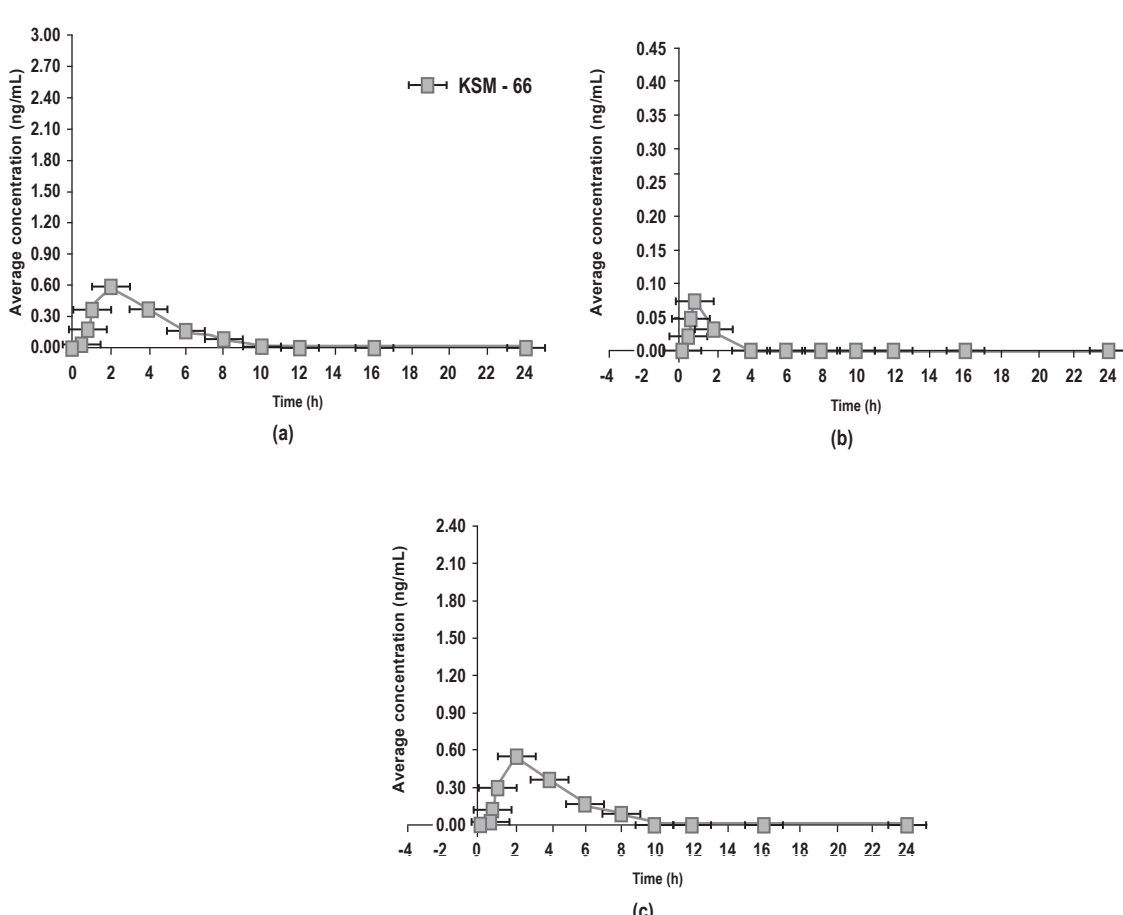


Figure 1: Plasma concentration (mean±SD) of KSM-66 Ashwagandha® between 1 to 24 hours post-dose. (a) Average concentration (ng/ml) for total withanolides; (b) average concentration (ng/ml) for withanolide A; (c) average concentration (ng/ml) for 12-Deoxywithastramonolide.

After a single-dose administration of 300 mg KSM-66 Ashwagandha®:

- T_{max} was 2 hours for total withanolides, and 1 hour for withanolide A.
- C_{max} was 3.07 ng/ml for total withanolides, and 0.49 ng/ml for withanolide A.



Clinically Validated for Stress and Mood Support*

More than 20 double-blind, randomized, placebo-controlled clinical trials demonstrating that it can:

- Help to Ease Occasional Stress*
- Reduce Stress-Related Eating*
- Promote Restful Sleep*
- Support Sexual Well-Being in Both Men and Women*

At Protocol For Life Balance®, we believe in offering supplements with the best ingredients. KSM-66 Ashwagandha® has been extensively clinically evaluated for its stress relieving properties.* Furthermore, it promotes restful sleep making it an ideal supplement for your patients needing to cope with the stress of daily life.*