



Highlights of Aller-All™



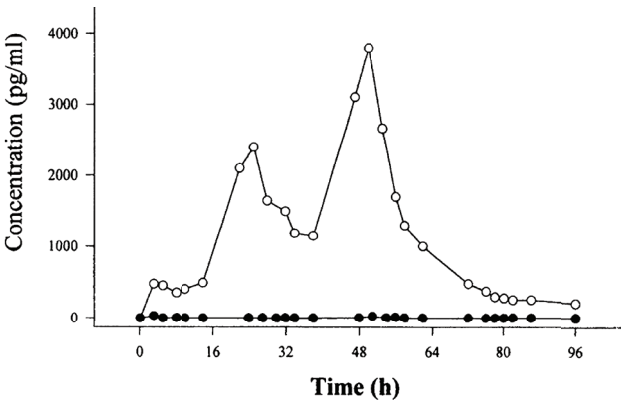
Bioactive
compounds

- Vitamin C: 300 mg/serving
- Quercetin: 800 mg/serving
- Bromelain: 435 mg (2400 GDU/g)/serving
- Completed with vitamin B-6, pantothenic acid, calcium, magnesium, zinc and botanicals (nettle leaf and licorice root extracts)



Bioavailable
compounds

- After ingestion, bromelain is absorbed and reaches the bloodstream



Time course of plasma concentration of **bromelain** after oral administration. RCT, n=19 healthy male volunteers 3g/d for 3 days.¹



Balanced
Immune
Response*

- With vitamins, minerals, and nutrients supporting a balanced immune response to environmental and typical seasonal challenges*
- Vitamin C, quercetin, and bromelain work together to support healthy respiratory structures and function*

At Protocol For Life Balance®, we believe that combining the right nutrients will achieve maximum efficacy. We created Aller-All™ by combining vitamins, minerals and botanicals known to support a balanced immune response to external seasonal challenges and to support healthy respiratory structures and function.* Aller-All™ has been for years and remains one of our best-selling products in the seasonal support product category.* You can recommend Aller-All™ in confidence for your patients in need of seasonal immune and respiratory support.*